


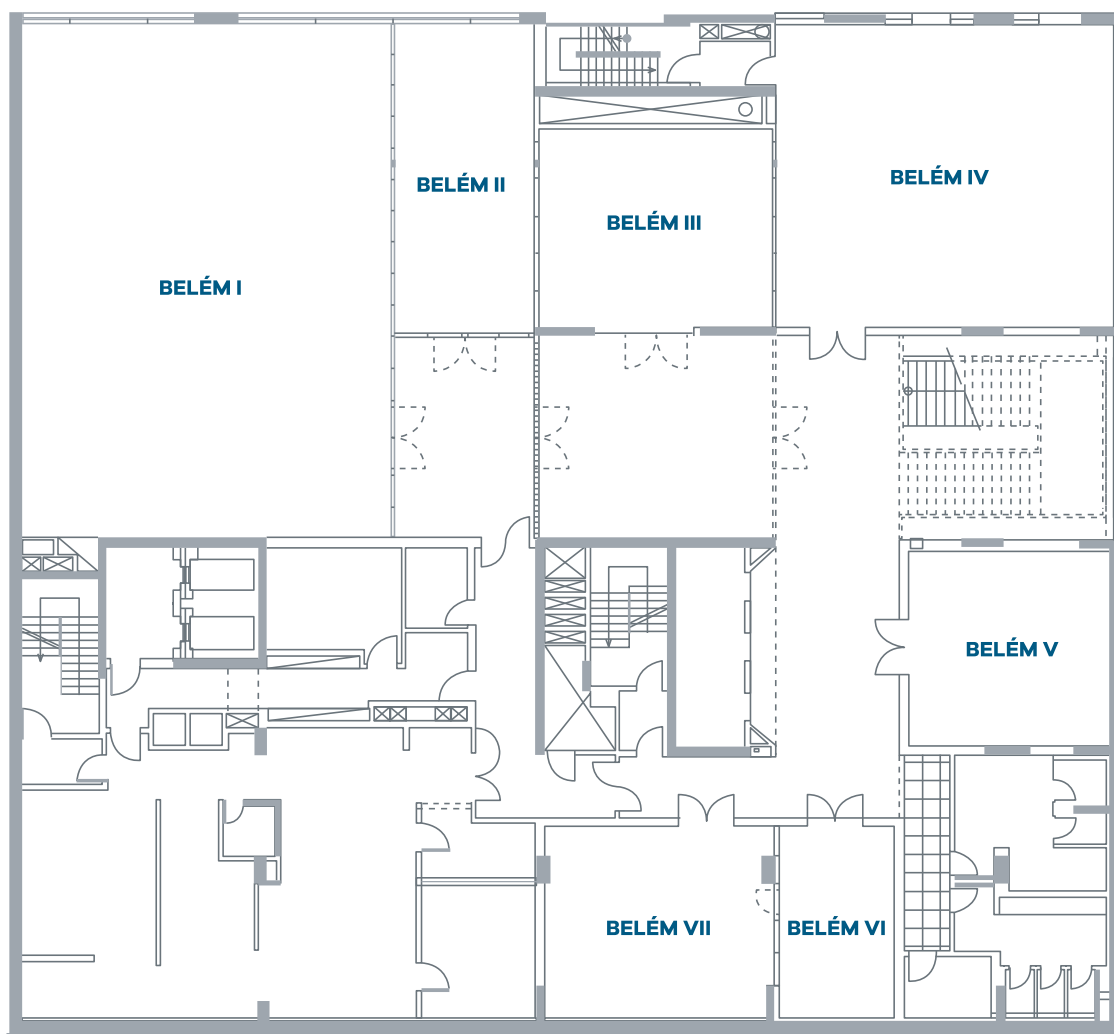


SPECIFICATIONS

ROOM	AREA sqm	DIMENSIONS m x m	HEIGHT m	 THEATRE	 SCHOOL	 'U' SHAPE	 BANQUET	 COCKTAIL
BELÉM I	198,42	11,9 x 16,6	3,5	200	102	45	100	250
BELÉM II	45,5	4,2 x 10	3,5	25	12	15	16	40
BELÉM III	48,56	7,5 x 6,4	3,5	30	18	15	16	50
BELÉM IV	107,31	9,75 x 10,9	3,5	90	42	30	60	100
BELÉM V	40,95	6,6 x 6,4	3,5	25	15	15	14	40
BELÉM VI	23,06	6,3 x 4	3,5	10	6	9	6	25
BELÉM VII	45,49	7,1 x 6,3	3,5	30	15	18	16	40
BELÉM I+II	273,69	16,5x 17,15	3,5	250	150	50	140	300
BELÉM I+II+III	371,68	24 x 17,15	3,5	350	-	-	200	350
BELÉM I+II+III+IV	478,99	-	3,5	-	-	-	240	500
BELÉM II+III	94,06	-	3,5	70	30	27	30	70
BELÉM II+III+IV	201,37	-	3,5	150	-	-	90	140
BELÉM III+IV	155,87	-	3,5	120	60	-	80	120
BELÉM VI+VII	68,55	6,5 x 11,4	3,5	50	20	-	30	70
RESTAURANTE	-	-	-	-	-	-	97	200

FLOOR PLAN



DIMENSIONS

Total area: 509,29 m²
Height: 3,5 m

ACCESSES

Stairs
Lifts

AIR CONDITION AND LIGHTING

Air conditioning: Yes
Natural light: Yes (Belém I, Belém II, Belém, IV),
No (Belém III, Belém V, Belém VI, Belém VII)
Blackout: Yes

DATA AND VOICE

ISDN connection: Yes
Phone connection: Yes

CONNECTIONS

Electric wires: Conventional + 3-phase
TV antenas: Yes
Phone lines: Yes
Internet connectivity: Yes

EQUIPMENTS INCLUDED

Ledwall 4 x 2 - 6000 lumens (Belém I)
Screen 3 x 2 (Belém I, IV)
Screen 2 x 2 (Belém II)
Projector (Belém II, Belém IV)
LCD 55/65" (Belém III, Belém VI)
LCD 86" (Belém V, Belém VII)
Flipcharts
Pulpit (upon availability)
Stage (2x1 platforms)